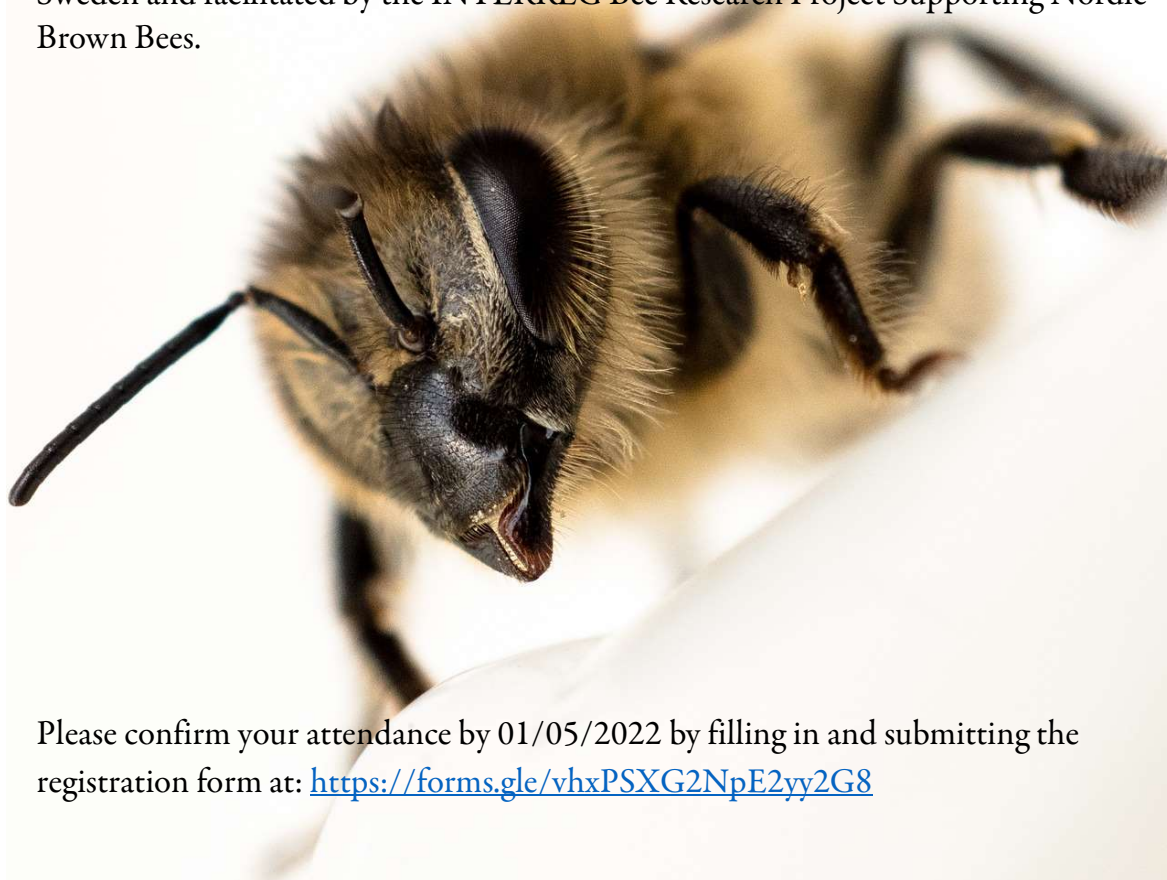


Invitation to
INTERREG Bee research conference
May 31—June 2, 2022, Nordens Ark, Sweden

To summarize three years of research on comparing honey bee subspecies, including the Nordic bee, you are invited to attend this conference hosted by Nordens Ark, Sweden and facilitated by the INTERREG Bee Research Project Supporting Nordic Brown Bees.



Please confirm your attendance by 01/05/2022 by filling in and submitting the registration form at: <https://forms.gle/vhxPSXG2NpE2yy2G8>

Program

May 31, Tuesday

08.00-10.00	Registration, morning coffee with sandwich (hotel foyer)	
10.15-10.30	Welcome (Tigerhouse) Nordens Ark	Mats Höggren, NA
10.30-11.00	Intro to the project B1stånd and INTERREG	Mats Niklasson, NA and Luis Cadahía-Lorenzo, Biröckerlag
10.30-11.00	3 years INTERREG project – a summary	Sonja Leidenberger, HIS
11.00-11.30	Rescuing the last Nordic bee in Sweden	Ingvar Arvidsson, Nordbi
11.30-12.00	Dynamics of honey bee subspecies historically	Mats Niklasson, NA
12.00-13.15	Lunch in the restaurant	
13.15-14.00	Guided tour Experimental apiary (2 groups)	Sonja Leidenberger, HIS and Ann-Charlotte Berntsson, NA
14.00	Session 1 Ecology and Behavior	
14.00-14.20	Winter survival and weight losses	Niclas Norrström, HIS
14.20-14.35	Thermography analysis during winter	Finja Schaumann, HIS and Sonja Leidenberger, HIS
14.35-15.00	Fly activities and other ecological observations	Sonja Leidenberger, HIS and Niclas Norrström, HIS
15.00-15.15	Coffee	
15.15-15.45	Investigating adaptation and diversity of wild Irish honeybees.	Grace McCormack, NUI
15.45-16.05	Comparison of simultaneous behaviour between four <i>Apis mellifera subspecies</i> : summer 2021.	Elizabeth Crawford, QUB
16.05-16.15	Comparison of simultaneous behavior between four <i>Apis mellifera subspecies</i> : spring 2022	Toni Högberg, HIS
16.15-16.45	Norwegian results of the INTERREG project	Luis Cadahía-Lorenzo, Biröckerlag
16.45-17.15	Introgession and the genetic basis of colony level traits in <i>Apis mellifera mellifera</i> .	Victoria Buswell, UOP
19.00	Dinner in the restaurant	

June 1, Wednesday

07.30-08.30	Breakfast	
8.30	Session 2 Bee health and honey production	
09.00-09:30	Bee health and bee diseases - an overview	Eva Forsgren, SLU
09.30-09:40	Questions	
09.40-10.15	<i>Varroa</i> resistance	Eva Forsgren, SLU
10.15-10.30	Coffee	

10.30-10.45	<i>Varroa</i> in the INTERREG project	Sonja Leidenberger, HIS
10.45-11.20	Nosema in the INTERREG project	Natuschka Lee, UU
11.20-11.40	Honey production and quality	Sonja Leidenberger, HIS
11.40-12.00	Honey analysis for pollen	Åslög Dahl, GU
12.15-13.00	Lunch in the restaurant	
13.00-13.55	Guided tour to the Observation hive and pollination loop (2 groups)	Ann-Charlotte Berntsson, NA and Mats Niklasson, NA
14.00	Session 3 Pollination	
14.00-14.45	Pollen selection in the INTERREG project	Åslög Dahl, GU
15.00-15.15	Coffee	
15.15-16.00	The potential of spatial prediction models for informing pollinator and pollination conservation plans	Markus Sydenham, NINA
16.00-16.45	Pollen microscopy laboratory	Åslög Dahl, GU
16.45-17.10	Breeding the Nordic bee (<i>M.mellifera</i>) in Norway	Camilla Sundby, Birökterlag
17.10-17.30	Information about breeding station and work at NA	Ann-Charlotte Berntsson, NA and Mats Niklasson, NA
19.00	Barbeque dinner in Varghuset, including guided tour in the zoo	

June 2nd Thursday

07.30-08.15	Breakfast	
08.15	Summary of the project and future perspective	
08.45	Transportation to Hamburgsund harbour	
10.00	Boat to Väderöarna	
10.45	Arrival and coffee,	
11-12.30	Guided tour of the breeding station	Ann-Charlotte Berntsson, NA and others
12.30	Lunch at Väderöarna	
	Official ending of project and conference	
	Boat back	
14.30	Workshops at Nordens Ark: referensgrupp/board	
16.30	End	

Speakers

Mats Höggren, CEO Nordens Ark (NA), Sweden
Mats Niklasson, Nordens Ark (NA), Sweden
Luis Cadahía-Lorenzo, Birökterlag, Norway
Sonja Leidenberger, University of Skövde (HIS), Sweden
Ingvar Arvidsson, Föreningen Nordbi, Sweden

Ann-Charlotte Berntsson, Nordens Ark (NA), Sweden
Niclas Norrström, University of Skövde (HIS), Sweden
Finja Schaumann, University of Skövde (HIS), Sweden and University Jena, Germany
Grace McCormack, National University of Ireland Galway (NUI), Ireland
Elizabeth Crawford, Queen 's University Belfast (QUB), Ireland
Toni Högberg, University of Skövde (HIS), Sweden
Victoria Buswell, University of Plymouth (UOP), United Kingdom
Eva Forsgren, Swedish University of Agricultural Sciences (SLU), Sweden
Natuschka Lee, Umeå University (UU), Sweden
Åslög Dahl, University of Gothenburg (GU), Sweden
Markus Sydenham, Norwegian Institute for Nature Research (NINA), Norway
Camilla Sundby, Birökterlag, Norway

Accommodation

The on-site Nordens Ark Hotel is available for accommodations. The hotel has 29 rooms. Single room 1149 sek, double 1599 sek, room with three beds 2399 sek, room with four beds 3399 sek per night.

If you have any questions concerning registration or accommodation please feel free to contact:

ulrica.ahlrot@nordensark.se